

Proleptic Appointment Support

ABOUT THE INSTITUTE FOR HEALTH DISCOVERY AND INNOVATION

The Institute for Health Discovery and Innovation (IHDI) at the University of Galway is an interdisciplinary, cross college, Institute focused on supporting high quality research activity across the domains of health discovery and innovation research. The Institute's mission is to advance fundamental and applied understanding of disease and drive innovative health solutions. Its vision is to be a world-leading centre for health discovery and innovation through excellence in research, people and partnerships. The Institute prioritises developing talent and fostering internal and external collaboration.

The Institute's thematic structure includes three pillars:

1. Fundamental Discovery
2. Enabling Technologies and Innovation
3. Health-Based Challenges

VALUE PROPOSITION

IHDI delivers dedicated support to enable proleptic appointments, ensuring a smooth and well-organised experience for both candidates and research teams. This includes coordinating travel and accommodation arrangements to ease logistical pressures. Candidates are also introduced early to the Post-Award support team, providing insight into the administrative and operational supports available following appointment.

DESCRIPTION OF RESEARCH PROGRAMME

The Wellcome Trust Career Development Award, which focuses on mid-career researchers from any discipline who have the potential to be international research leaders. The funding enables them to develop their research capabilities, drive innovative programmes of work and deliver significant shifts in understanding related to human life, health and wellbeing.

SELECTED KEY OUTCOMES

- 1 Developed a new principal investigator starter guide to streamline Mihailo's, and future appointees, on boarding / induction, and provide clear consistent guidance and advice.
- 2 Coordination of Press Release
- 3 Coordinated travel and accommodation and logistical support for interview preparation.
Coordinated logistical support in advance of appointment to the University
- 4 Recruitment of staff and assistance with their relocation to the University of Galway

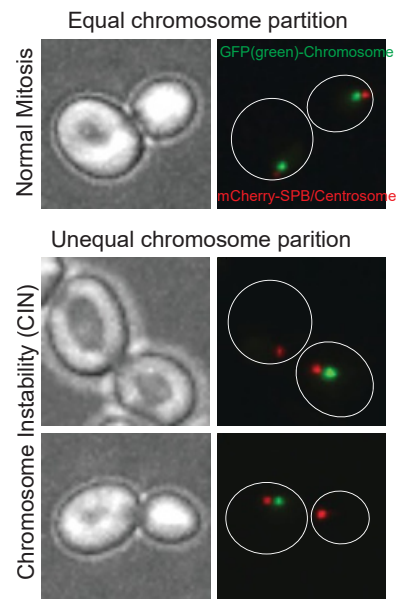
MEET THE INVESTIGATOR

Dr Mihailo Mirkovic has an international research career spanning Serbia, Portugal and Switzerland. He completed his undergraduate and master's studies in molecular biology and physiology at the University of Belgrade, before undertaking a PhD at the Instituto Gulbenkian de Ciência in Portugal under the supervision of Dr Raquel Oliveira. He has conducted his postdoctoral work in the laboratory of Yves Baral, at ETH Zurich, Switzerland.



RESEARCH ACTIVITY

Dr. Mirkovic will lead a research programme to examine the adaptive potential of errors in chromosome segregation during mitosis. Errors during mitosis result in Chromosome Instability (CIN). Instead of equally partitioning their chromosomes, cells experiencing CIN will undergo uneven chromosome segregation (see image). This phenomenon is linked to developmental disorders, cancer and infertility in humans. However, certain organisms, such as fungi, can use this instability to their advantage. CIN creates cells with new combinations of chromosomes, which can be used to survive many different stress conditions. One of those conditions is antifungal treatment. When faced with an antifungal drug, fungi elevate their rate of chromosome instability, create many new types of cells, including ones which are resistant to the antifungal treatment. Therefore, understanding how these fungi become chromosomally unstable, and how do they create this diversity that enables them to survive, is fundamental in understanding their acquisition of antifungal resistance, which is a global public health concern.



Chromosomes (marked with GFP-Green) partition equally during normal mitosis (top), but unequally if chromosome instability occurs (bottom).

IHDI SUPPORT

- Provided support for the proleptic appointment, including booking accommodation and coordinating the arrangement and reimbursement of associated expenses
- Liaised closely with relevant stakeholders to support engagement with the procurement Tender Initiation Form (TIF) process, ensuring requirements were understood and progressed efficiently
- Coordinated the development and approval of a press release to support visibility and institutional communications around the appointment
- Provided project initiation support
- Provided one dedicated point of contact to assist with project initiation

TESTIMONIAL

The support I have received from the University, the IHDI and the Centre for Chromosome Biology (CCB) has been absolutely instrumental in securing this competitive funding. The offer of a permanent position via the proleptic scheme, the ability to travel to Galway and prepare for the Wellcome interview, was a good competitive edge to have. In addition, the post award support has been great, providing my research with public visibility, but also helping me set up my group on a day-to-day basis.

Dr Mihailo Mirkovic
Senior Lecturer in Biochemistry

